

- A high flow stainless steel filter/regulator
- Materials meet NACE MR-0175
- Suitable for marine, offshore applications



Technical data

Medium:

Compressed air only

Maximum inlet pressure:

31 Bar (manual drain)

17 Bar (autodrain)

Ambient temperature:

–20°C to +80°C

Consult our Technical Service for use below +2°C

Element:

5 µm

Flow rate:

2400 l/min

Gauge ports:

1/4"NPT

Materials:

Body, bowl, bonnet & adjusting screw:
 Stainless steel

Elastomers:

Viton

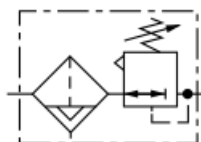
Filter element:

Stainless steel 316 (5 µm)

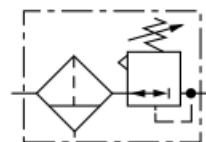
Ordering information

See *ordering information* on the following pages

ISO Symbols



Automatic Drain, Relieving

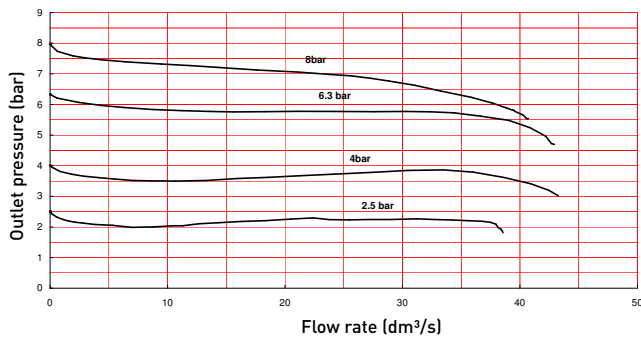


Manual Drain, Relieving

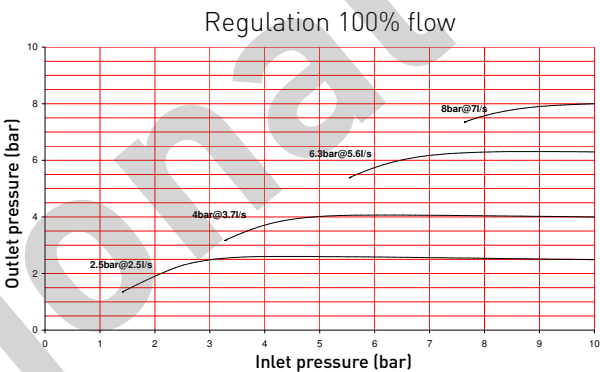
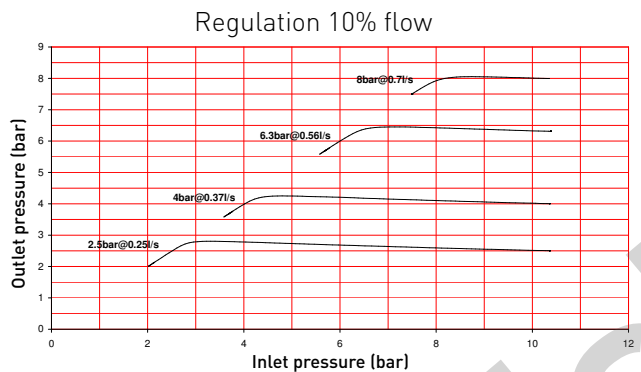
* For applications requiring non-relieving version , please contact Norgren.

Flow characteristics

Inlet pressure: 10 bar, filter element: 5µm
Port size: 1/4"NPT



Regulation flow characteristics



Standard models

Port size	Model	Flow* (l/min)	Drain	Weight (kg)
1/4"NPT	B38P-254-B1MA	2400	Manual	1.61
1/4"NPT	B38P-254-A1MA	2400	Automatic	1.74
3/8"NPT	B38P-354-B1MA	2400	Manual	1.60
3/8"NPT	B38P-354-A1MA	2400	Automatic	1.73





* Typical flow with 10 bar inlet pressure, 6,3 bar set pressure and a 1 bar drop from set.

Options selector

Port size	Substitute	Threads	Substitute
1/4"NPT	2	NPT	A
3/8"NPT	3		
Diaphragm	Substitute	Outlet pressure adjustment range*	Substitute
Relieving with panel nut	4	0,50 ... 10 bar	M
Drain	Substitute		
Automatic	A		
Manual – short bowl	B		
Element	Substitute		
5 µm	1		

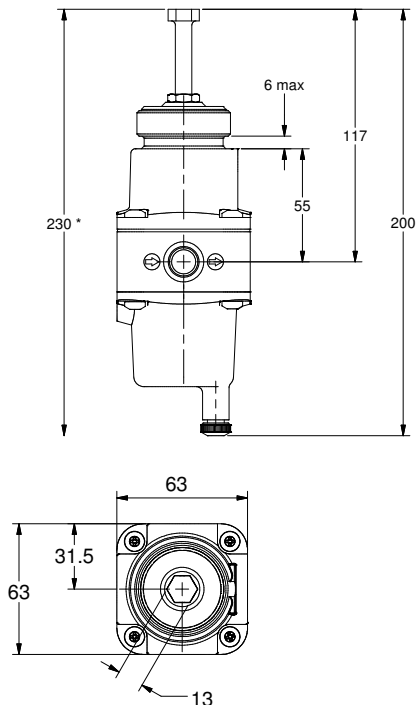
* For applications requiring other pressure ranges, please contact Norgren.

Accessories

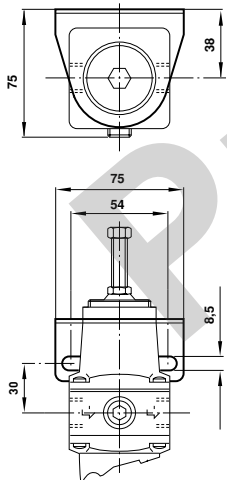
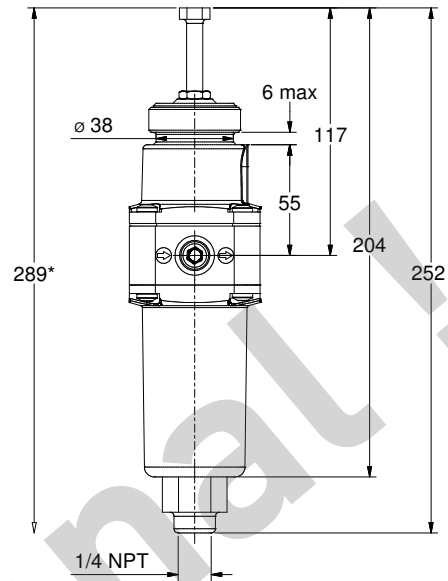
Series	Neck mounting bracket	Gauge (0 ... 10 bar)	Panel mounting	Plastic adjusting knob
				
B38P	18-001-973 (includes panel nut)	18-013-913*	5988-02 (Nut only)	74630-04

* Stainless steel items not strictly to NACE standard MR-01-75.

Manual drain



* Minimum clearance required to remove bowl.



These products are intended for use in industrial compressed air systems only. Do not use these products where pressures and temperatures can exceed those listed under **‘Technical Data’**.

The system designer is warned to consider the failure modes of all component parts used in fluid power systems and to provide adequate safeguards to prevent personal injury or damage to equipment in the event of such failure.

System designers and end users are cautioned to review specific warnings found in instruction sheets packed and shipped with these products.